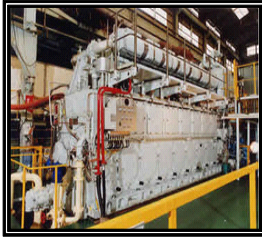


Scope of Supply – Marine International Co.,Ltd.

Tigers Bldg. 1003, 1-44-10 Higashi Ikebukuro, Toshimaku, Tokyo 170-0013 Japan

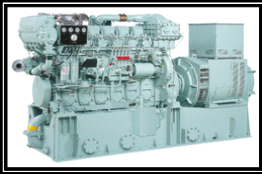
Tel: +81 3 5960 0510 Fax: +81 3 5960 0520 E-mail: sales@marine-intl.jp

page 1



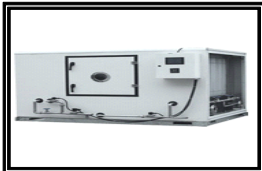
Main Engine

- Mitsubishi Heavy Industry
- Kwasaki Heavy Industry
- Man B&W
- Daihatsu
- Yanmar
- Hanshin
- Makita
- STX Man & B&W



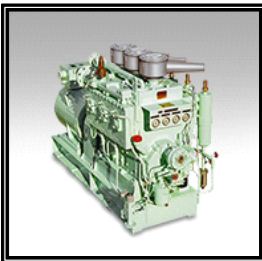
Auxiliary Engine / Generator

- Yanmar
- Daihatsu



Air Conditioning Unit / Refrigeration

- Daikin Industries Ltd.
- Namirei Showa
- Nissin Refrigeration
- Ushio Reinetsu



Compressor

- Tanabe Pneumatic Machinery
- Matsubara Iron Works
- Yanmar
- Suction Gas Engine Mfg. Co.,Ltd.
- Yanmar
- Tamrotor
- Sperre
- Hamworthy
- Sanwa Iron Works



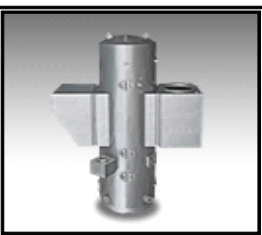
Pump

- Taiko Kikai Industries
- Heishin Pump
- Shinkokinzoku
- Teikoku Pump
- Ishii Pump
- Shin Shin
- Sasakura Engineering
- Daiichi Mfg. Co.,Ltd.
- Mansei Ind. Co.,Ltd.



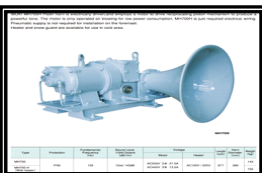
Purifier

- Mitsubishi Kakoki Kaisha
- Alfa-Laval K.K.



Burner / Boiler / Inert Gas System

- Osaka Boiler
- Volcano
- Miura Protec
- Nishida Marine Boiler Co.,Ltd.
- Mitsubishi Heavy Industry
- Tortoise Engineering
- Sunflame
- Aalborg Industries



Air Horn

- Ibuki Kogyo